

ISLE OF WIGHT ART CLUB

SPECIAL COMPETITION EDITION – MARCH 2022



The winners were chosen by artist Stephen Foster. We are very grateful to Stephen for his time and giving a critique for each winner. Stephen's website is www.stephenjfooster.com Which would you choose? Winners & their entries will be at Riverside on March 15th for their prizes.

Exhibiting Members: Winner – Anne Toase



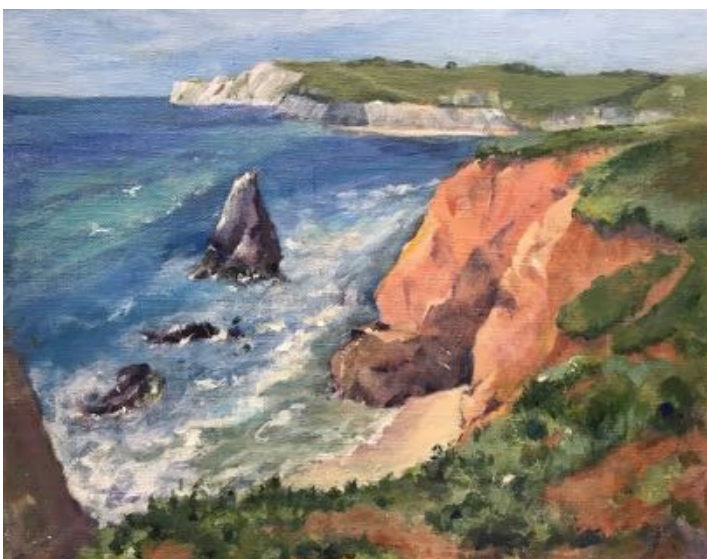
Stephen's comments: "First, as it is the one painting that escapes most successfully from being a painted photograph. The use of colour is imaginative and very well balanced and the main cliff face is particularly successful. Although the paint is laid on flat, it successfully creates atmosphere and light whilst still being a good representation of the scene. A clear winner which puts painterly qualities before representation but still represents accurately."

Runner up – Carol Owen



"Second place, as I like the lively and consistently worked picture surface. The application of paint gives off a real liveliness to the painting which becomes an evocation of atmosphere, which again helps the painting to be more than a painted photograph."

Members: Winner – Cathy Williams



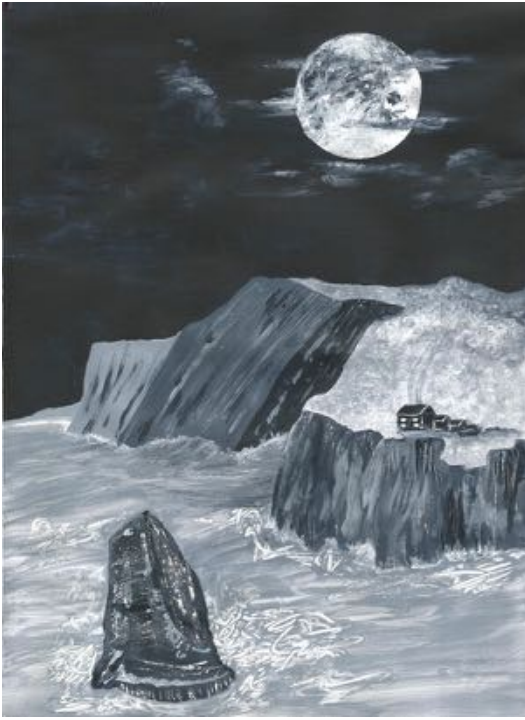
Stephen's comments: "This brings out the the structure of the cliffs very well and gets the feel of the area right. The sea is well done and there is a feeling of recession in the more distant land."

Runner up – Andrea Clarkson- Price



"This is painted with real life and energy which is why I nearly gave it first place. It is the one painting that least feels like a painted photo."

Members' Competition Entries: 8 in total

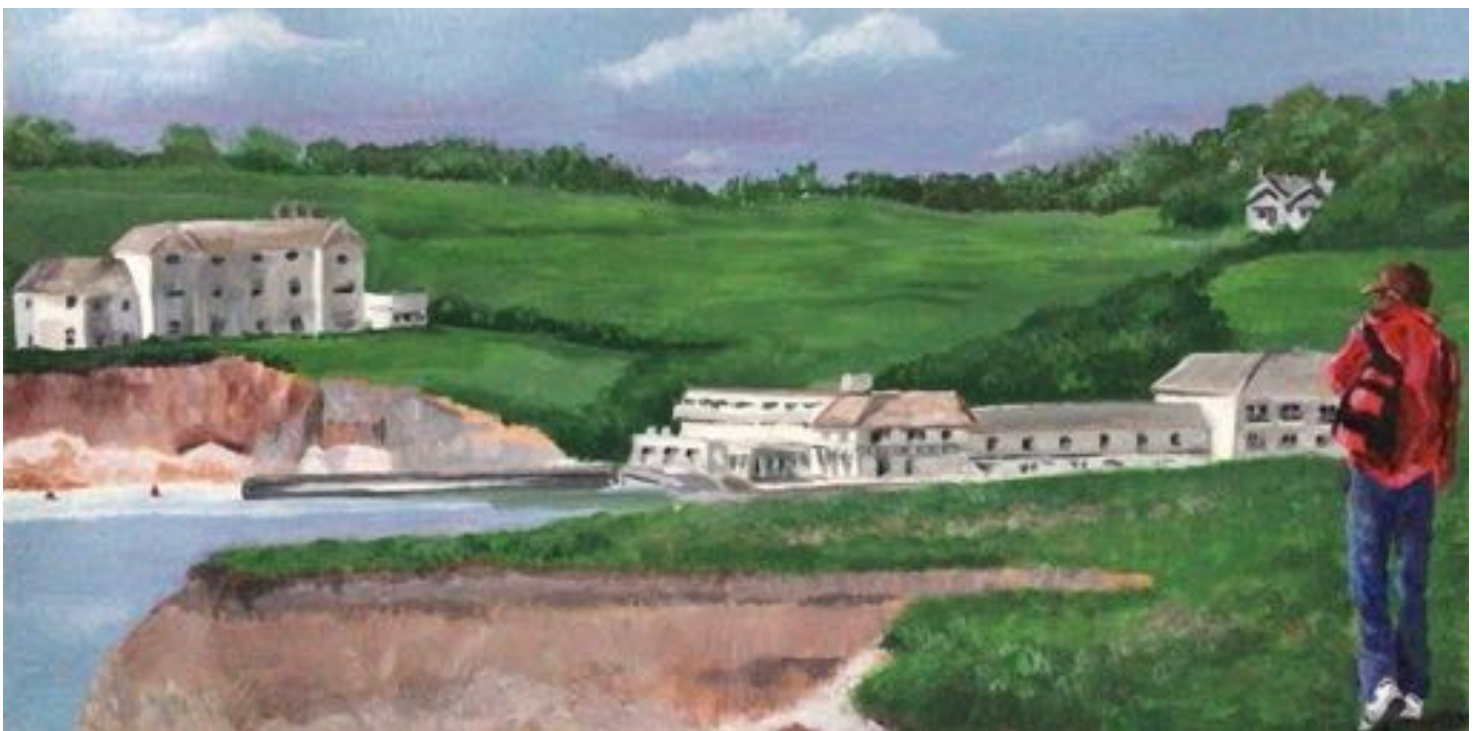
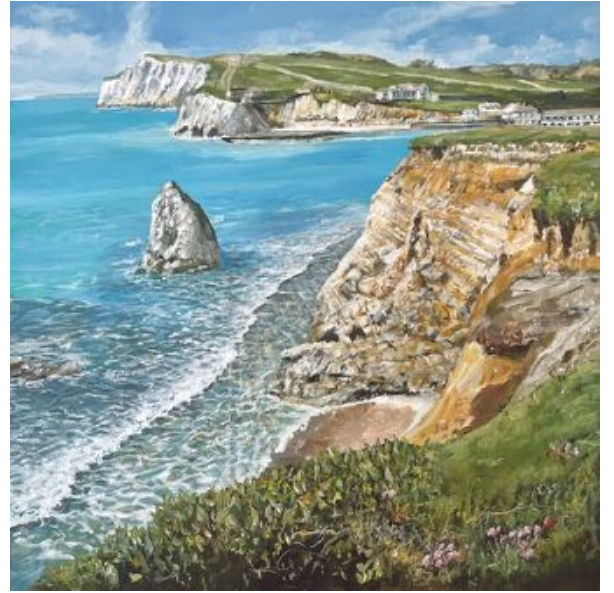


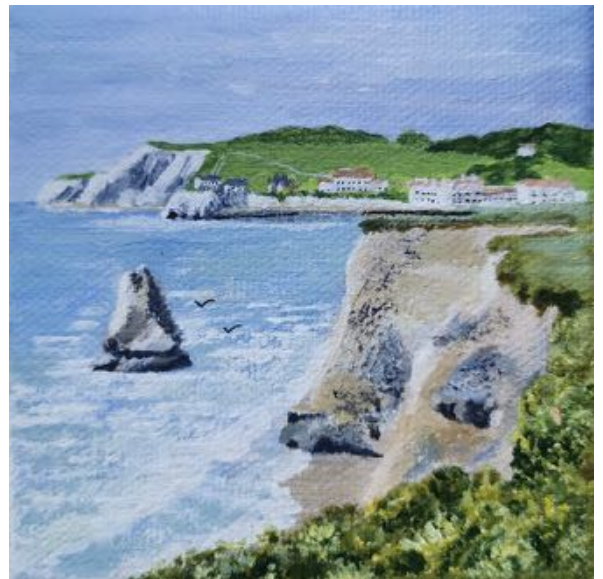
Left: Stephen made a special mention to Steve Mean's entry which he says is an imaginative re-creation, which is something he appreciated.



Exhibiting Members' Competition Entries: 18 in total.







Miniature



Our thanks to everyone who entered our competition. Every painting is different and shows the diversity of talent we have in our Club. We will be running a similar competition next year and smaller Christmas competition in this Autumn – details later in the year. We hope this has inspired everyone to enter next time.

Nicky Wells and Gillian Nye – Competition Organisers

Our next Newsletter will be published after the exhibition in early April. Any photos, articles or ideas please send to gilliannye@rocketmail.com Newsletter Editor. Thank you